

Northamptonshire

Health and Care Partnership



Health and Wellbeing Board Workshop on Place

September 2021

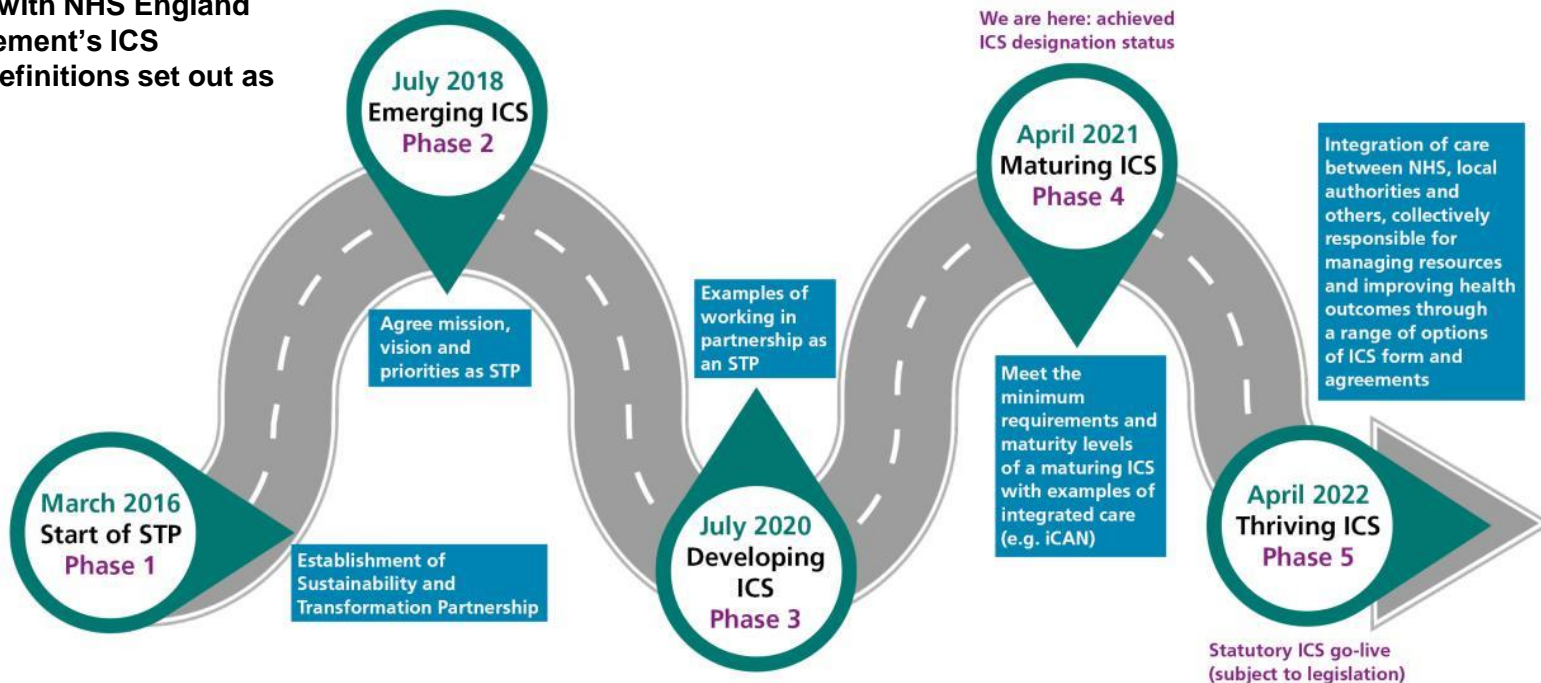
Purpose

- To discuss with the Health and Wellbeing Board and stakeholders the development of “place” in Northamptonshire
- To discuss how we connect together to deliver improved services
- To discuss responsibilities and to consider how we would deliver and oversee those responsibilities
- To discuss potential timelines and next steps

Our ICS road map

This road map highlights Northamptonshire's Integrated Care System journey, with NHS England and NHS Improvement's ICS maturity matrix definitions set out as key milestones.

Our goal is to establish Northamptonshire as a 'thriving ICS' by April 2022, which, subject to legislation, is the point when Integrated Care Systems are expected to become established in law.





AT A GLANCE:

Summary: The 'building blocks' of our ICS blueprint

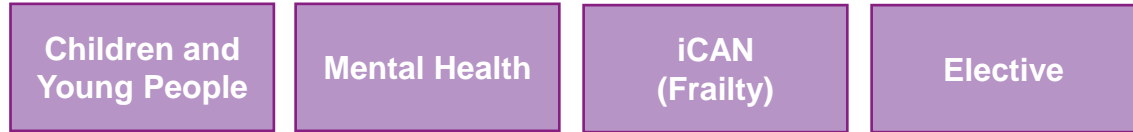


Our areas of focus

Integrated Care System



System-wide



Place

North Northamptonshire
Health and Wellbeing
Board

Place

West Northamptonshire
Health and Wellbeing
Board

Sub-Place

Sub-Place

Sub-Place

Sub-Place

Sub-Place

Sub-Place

Combined leadership for health and care system

Collaboratives

System-wide service redesign, transformation and delivery (Lead Provider/Alliance)

Oversee **place-based** joint commissioning and delivery

Neighbourhood (sub-place)

arrangements will be needed, as a basis of effective integration and tailoring of services to local needs. Delivery and business is done at this level.



AT A GLANCE: Defining Place & sub place

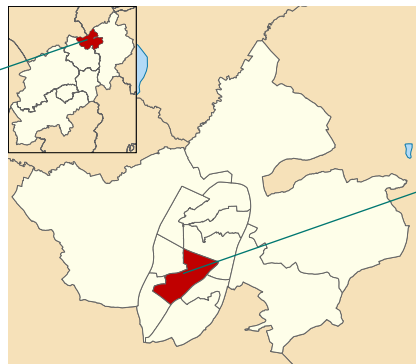
System - Northamptonshire



Place – North or West Northamptonshire



Community - An area within place with an identity



Neighbourhood – part of a community

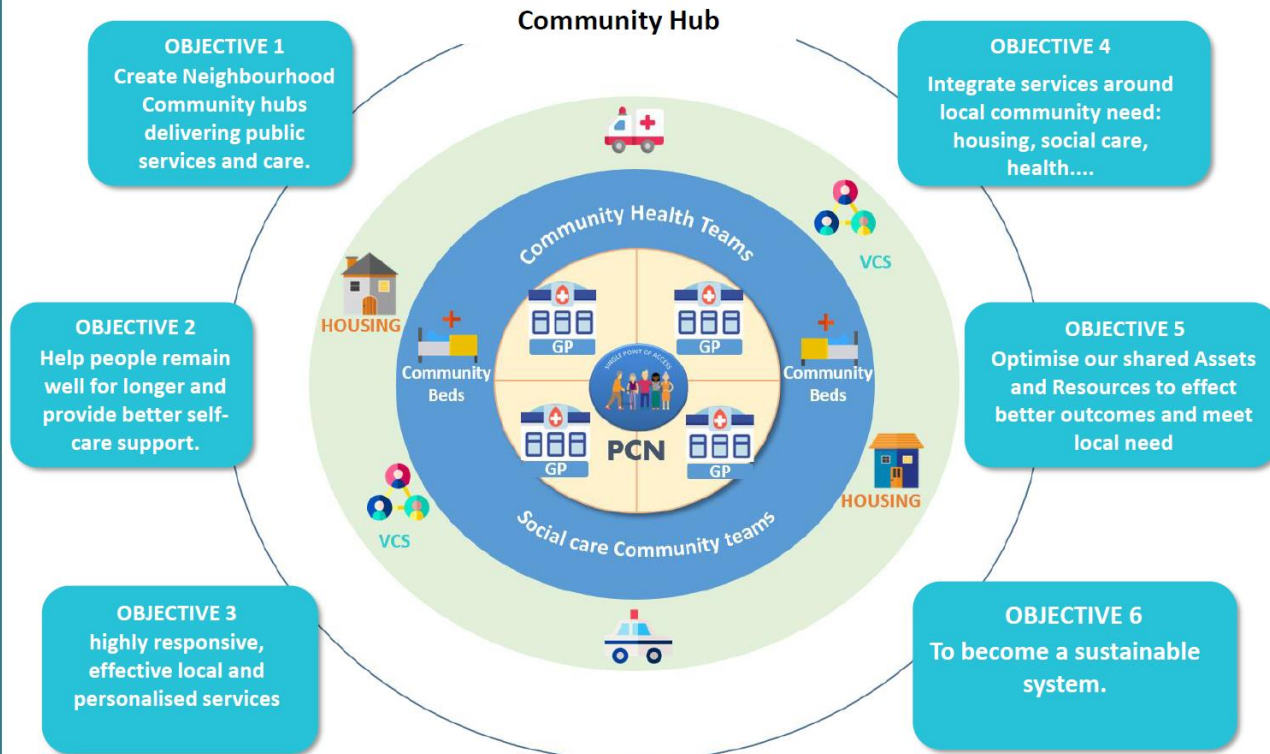




At a neighbourhood level we want to create integrated hubs delivering a range of services that meet local needs and outcomes set out in place based Health and Wellbeing Strategies

Discussed at Partnership board in May 2019

What we want to achieve



Our system vision and pillars

A positive lifetime of health,
wellbeing and
care in our community.

Children & Young People

Elective Care

ICAN (Integrated Care
Across
Northamptonshire)

Mental Health & Learning
Disabilities



Current HWBB strategy and pillars

Our vision is to improve the health and wellbeing of all people in Northamptonshire and reduce health inequalities by enabling people to help themselves.

Priority 1: Every Child gets the Best Start

Priority 2: Taking Responsibility and Making Informed Choices

Priority 3: Promoting Independence and Quality of Life for Older Adults

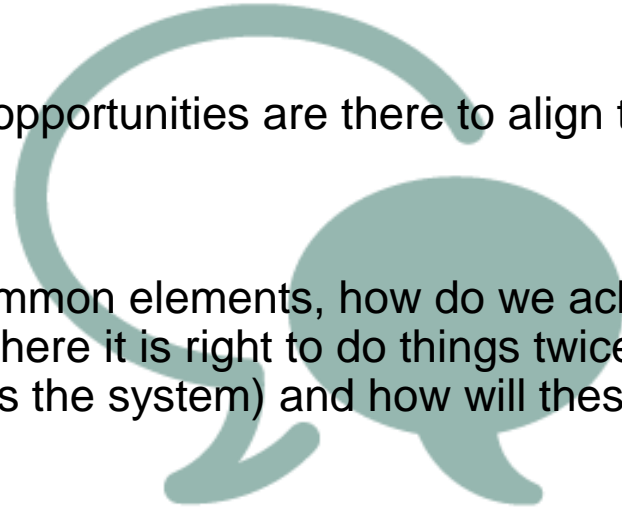
Priority 4: Creating an Environment for all People to Flourish



As each HWBB creates its own strategy is there an opportunity to align the NHCP and HWBB?

Discussion: Questions to explore

- Whilst HWBB have some limited statutory functions what are the opportunities for HWBB to go further in shaping more local approaches at the place, community and neighbourhood levels?
- As each HWBB creates its own strategy, what opportunities are there to align the NHCP and HWBB?
- If each North and West HWBB strategy has common elements, how do we achieve the right balance, for example will there be times where it is right to do things twice (once in each place) or do it once, (one approach across the system) and how will these decisions be made?
- What membership of HWBB do we want for North Northamptonshire?



Our possible future...

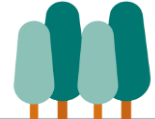
*A place based vision linked
to the system vision*

Agreed Pillars

Agreed Pillars

Agreed Pillars

e.g. Diabetes at place,
community &
neighbourhood



Inside a pillar

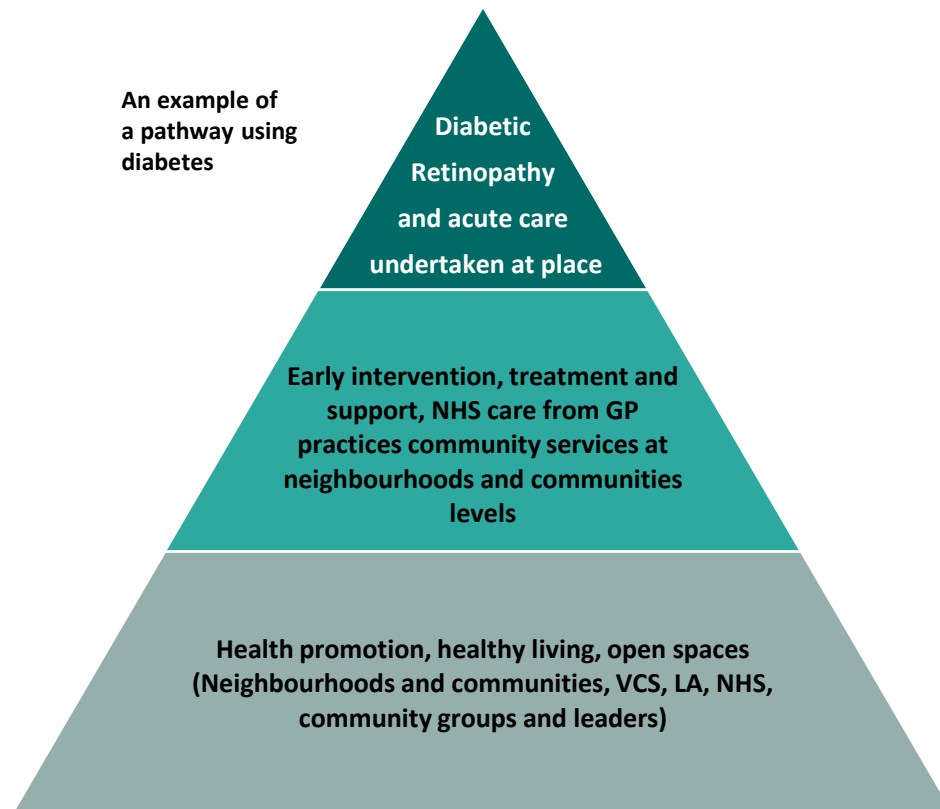
Each pillar has one vision and agreed shared goals with a delivery plan that could include...

A collaborative of organisations working together (VCS, LA and wide NHS)

Individual organisations

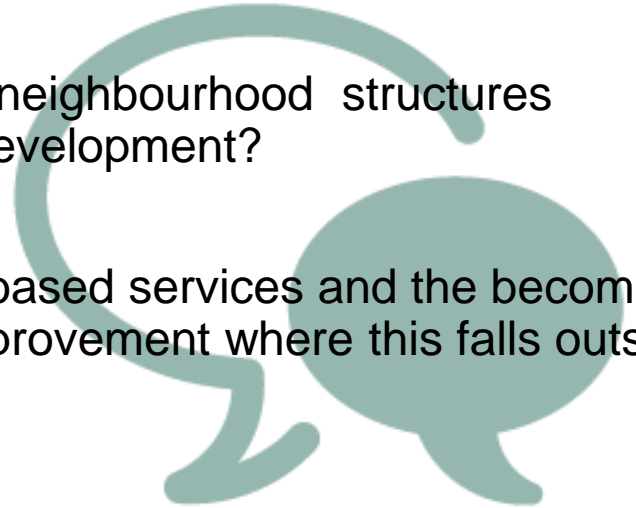
Community led initiatives

An example of a pathway using diabetes

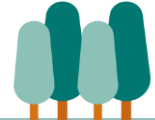


Questions to explore

- How does the HWBB influence strategy at an ICS/NHCP level in order to see services shaped and mobilised in the right way around communities and neighbourhoods?
- How does the HWBB ensure that place and neighbourhood structures encompass and are recognised in the ICS development?
- How can the HWBB assure itself that place based services and the become a fifth engine for driving service integration and improvement where this falls outside of provider collaboratives?
- What are the key design principles we would want to see in delivery at a place level?



Next steps and timelines



Thank you

Northamptonshire
Health and Care Partnership

